



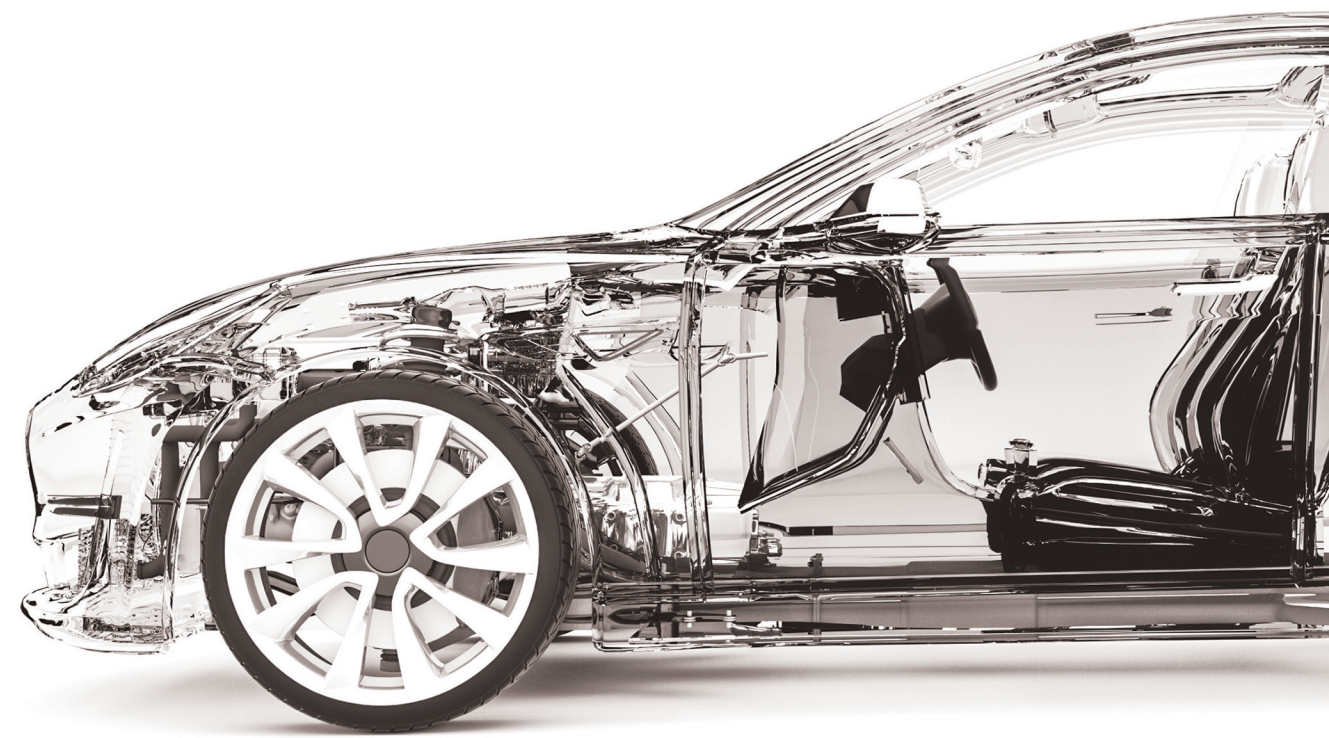
HEBEI CBIES IMPORT & EXPORT TRADING SERVICES CO., LTD.

ADDRESS: NO.118 EAST ZHONG SHAN ROAD, SHI JIA ZHUANG, HEBEI, CHINA  
TEL: +86-311-8603 9188  
FAX: +86-311-8607 3288  
EMAIL: SALES01@CBIESMETALS.COM  
WEB: WWW.CBIESAUTOMOTIVE.COM



# HIGH QUALITY LEAD TO SPEED AND PASSION

HEBEI CBIES IMPORT &  
EXPORT TRADING SERVICES  
CO., LTD.





# CONTENT

**01**

**COMPANY PROFILE**

**03/12**

**PRODUCT INTRODUCTION**

Impact Beam Tubes  
Shock Absorber Tubes  
Exhaust Tubes  
Cross Car Beam Tubes & Frame  
of Car Seat tubes

**14/17**

**PRODUCTION EQUIPMENTS**

**19**

**INSPECTION INSTRUMENTS**

## HEBEI CBIES IMPORT & EXPORT TRADING SERVICES CO.,LTD.

HEBEI CBIES is a subsidiary branch of HEBEI SINOSTAR which is jointly funded by Hebei Tianli Pipe Making Co., Ltd. and Hebei Sinostar Trading Co., Ltd. dealing mainly in the export of automotive tubes including Impact Beam Tubes, Shock absorber tubes, Exhaust tubes, Hydraulic Cylinder tubes, Cross Car Beam Tubes & Frame of Car Seat tubes etc.

"Quality, Service, Honesty and Speciality" are our core values, which have formed the soul and DNA of HEBEI CBIES. Every member of the company believes that the unified values will bring efficient work and be helpful to make the customers greater.

From complex supply chain management to urgent breakdown requirements, HEBEI CBIES' well-trained team, which is full of ambition and creativity, is able to provide one stop solution to your steel automotive tubes requirements.



IATF16949:2016 CERTIFICATE



ISO9001: 2015 CERTIFICATE



## PRODUCT INTRODUCTION

Beam Impact Tubes  
Shock Absorber Tubes  
Exhaust Pipes  
Dashboard Tubes & Seat Tubes



# IMPACT BEAM TUBES

Material: Welded steel tubes

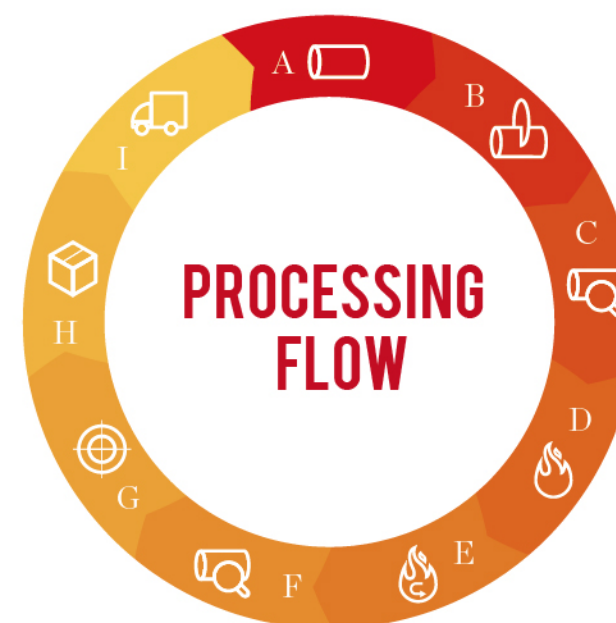
Specification:

OD: 20-35mm, 31x25mm, 25.4x20mm

Thickness: 1.4-3.0mm

Grade: BR1500HS

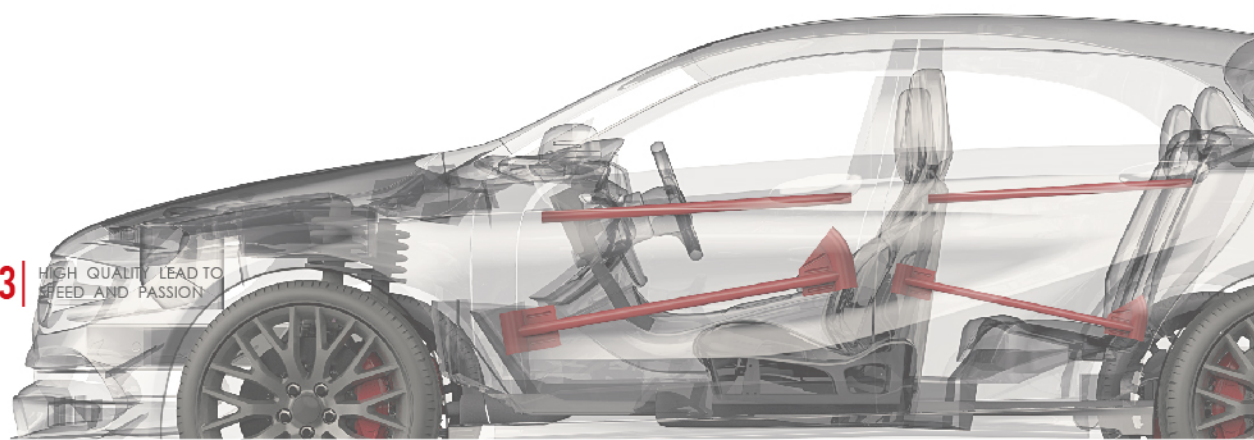
Delivery conditions: Q+T



- |   |            |   |               |
|---|------------|---|---------------|
| A | Raw tubing | F | Inspection    |
| B | Cutting    | G | Straightening |
| C | Inspection | H | Packing       |
| D | Quenching  | I | Delivery      |
| E | Tempering  |   |               |



Chemical composition					Mechanical properties		
C%	Si%	Mn%	P%	S%	Tensile Strength (MPa)	Yield strength (MPa)	Elongation %
0.20-0.25	0.15-0.35	1.1-1.4	≤0.025	≤0.01	≥1475	≥1078	≥8







# SHOCK ABSORBER TUBES

**Material:**Welded steel tubes

**Specification:**

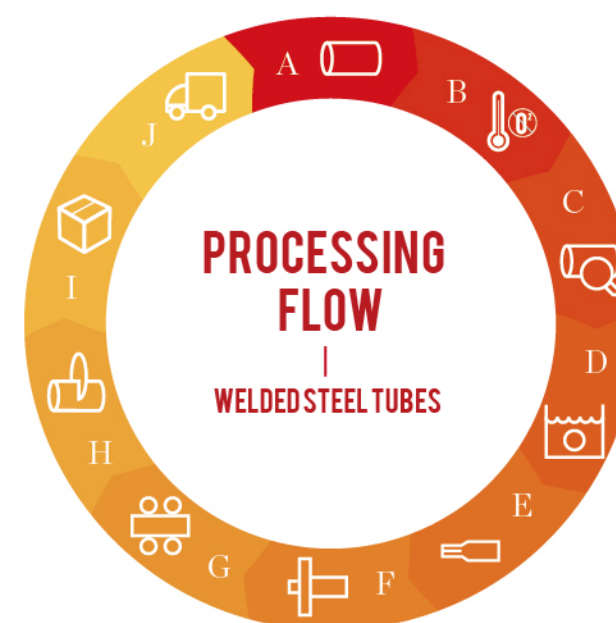
**OD:** 18-63.5mm

**Thickness:**1.0-4.0mm

**Standard:**EN 10305-2,DIN2393,JIS-G3445,ASTM A513

**Grade:**E215,E235,E355,ST37-2,ST5-3,STKM11A,STKM12,STKM13,STKM14,MT1010,1015,1020

**Delivery conditions:** BK or +C



- A** Raw tubing
- B** Non-oxygen annealing
- C** Inspection
- D** Acid pickling&Phosphating
- E** Pointing
- F** Drawing
- G** Straigh tening
- H** Cutting
- I** Packing
- J** Delivery





# SHOCK ABSORBER TUBES

**Material:**Seamless steel tubes

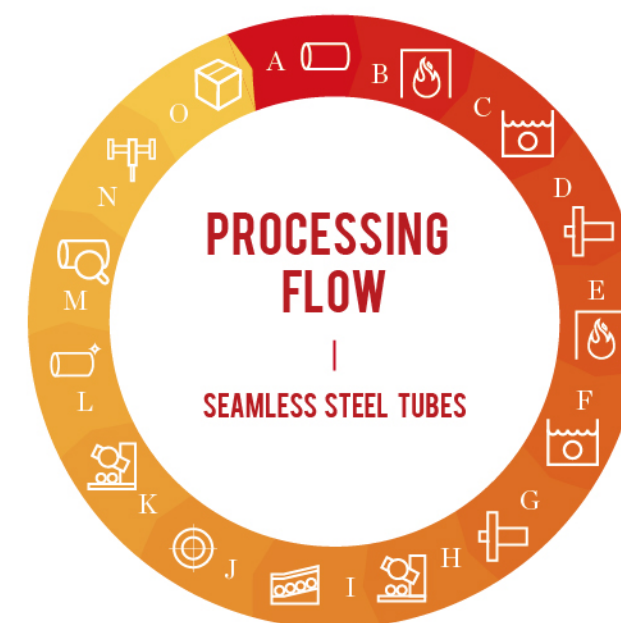
**Specification:**

**OD:** 18-121mm

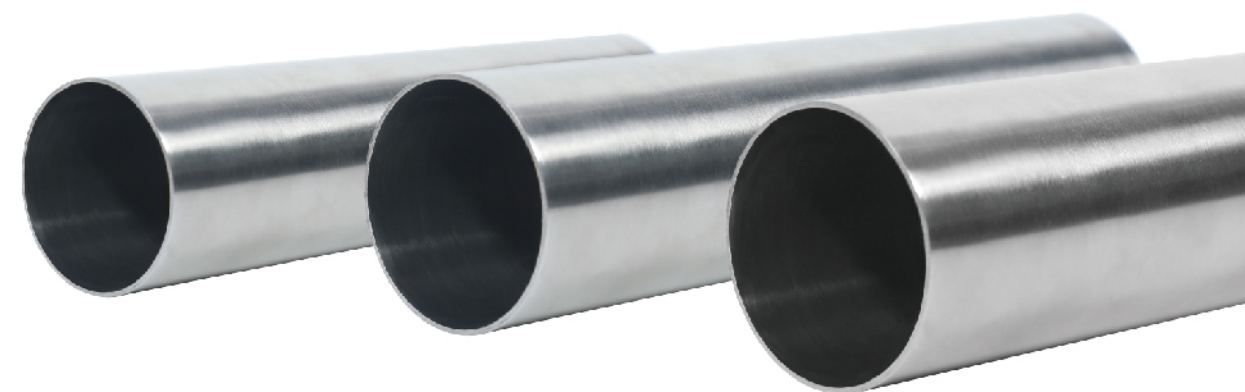
**Thickness:**1.0-8.0mm

**Standard:**EN 10305-1,DIN2391,JIS -G3445,ASTM A519

**Grade:**E215,E235,E355,ST35,ST45,ST52,STKM11A,STKM12,STKM13,STKM15,STKM17,STKM18,SAE1010,SAE1020,SAE1045,SAE4130



<b>A</b>	Raw tubing	<b>F</b>	Pickling&lubricate	<b>K</b>	Fixed sawing
<b>B</b>	Anneal	<b>G</b>	Precision pullout	<b>L</b>	Polishing
<b>C</b>	Pickling&lubricate	<b>H</b>	Sawing pipe head	<b>M</b>	Test
<b>D</b>	First time drawing	<b>I</b>	Relief annealing	<b>N</b>	Honed or SRB
<b>E</b>	Anneal	<b>J</b>	Alignment	<b>O</b>	Packing





# EXHAUST TUBES

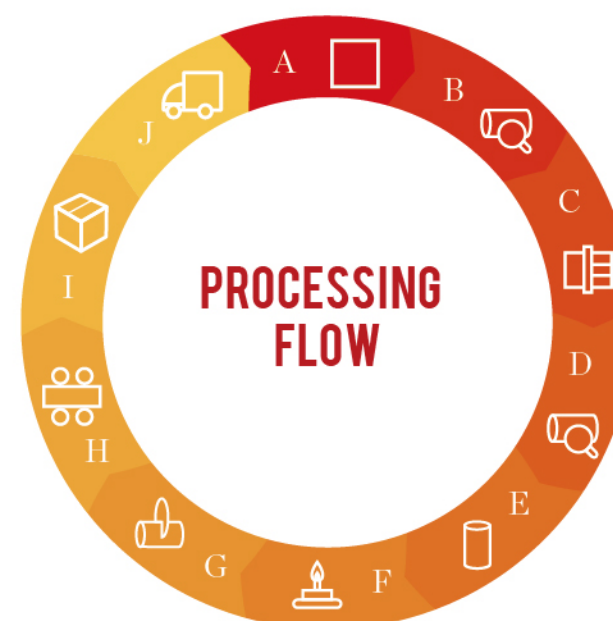
**Material:**Stainless steel tubes

**Specification:**

**OD:**16-133mm,**Thickness:**0.5-3.0mm

**Standard:** ASTM A554,JIS 3446,EN10296-2

**Grade:** SUH304,409/409L,421,436/436L,439



- A** Raw Material
- B** Inspection
- C** Slitting
- D** Inspection
- E** Forming
- F** High-frequency Welding or argon arc welding
- G** Flying Cutting
- H** Iron removal
- I** Packing
- J** Delivery

**Material:**Aluminium coated tubes

**Specification:**

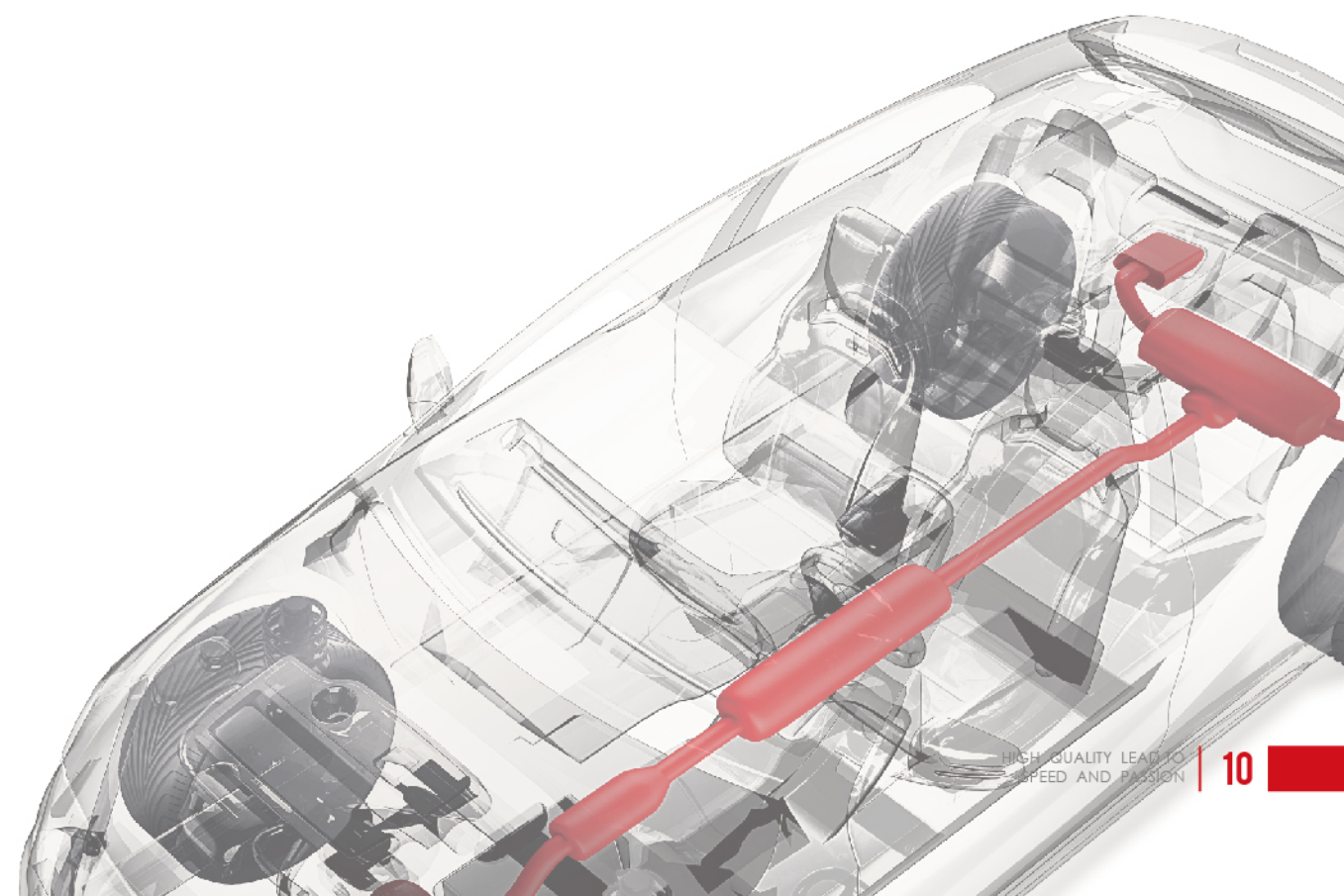
**OD:**16-133mm,**Thickness:**0.5-3.0mm

**Al coating:** 40g/40g, 60g/60g, 80g/80g, 120g/120g

**Standard:** JIS G3314, ASTM A463 /A463M ,EN 10346 etc.,

**Grade:** SA1C, SA1D, SA1E, FS, DDS, EDDS,

DX53D,DX54D





# CROSS CAR BEAM TUBES & FRAME OF CAR SEAT TUBES

Cross Car Beam Tubes  
Material:Welded steel tubes

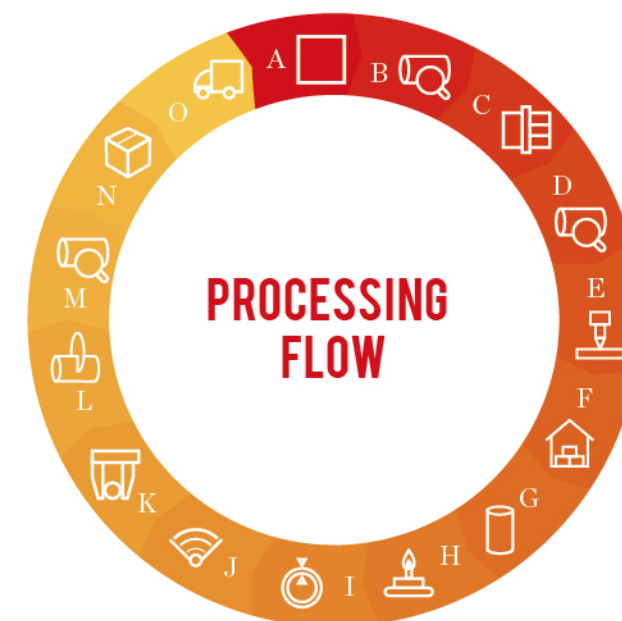
Specification:  
OD: 21-76mm  
Thickness: 1.0-3.0mm



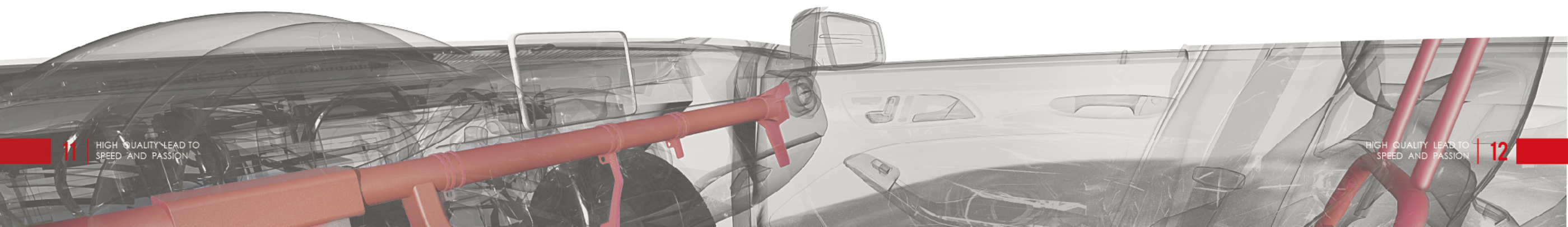
Frame of Car Seat tubes  
Material:Welded steel tubes

specification:  
OD:12-38  
Thickness: 1.0-3.0mm

Standard: EN 10305-3,DIN2394,JIS-G3445,ASTM A513  
Grade:E215,E235,E355,ST37-2,ST5-3,STKM11A,STKM12,STKM13,  
STKM14,MT1010,1015,1020



- |                                 |                                   |                                |
|---------------------------------|-----------------------------------|--------------------------------|
| <b>A</b> Raw material           | <b>F</b> Storing                  | <b>K</b> Sizing                |
| <b>B</b> Inspection             | <b>G</b> Forming                  | <b>L</b> Flying cutting        |
| <b>C</b> Slitting               | <b>H</b> High-frequency welding   | <b>M</b> Inspection            |
| <b>D</b> Inspection             | <b>I</b> Inner&Outer burr removal | <b>N</b> Packing               |
| <b>E</b> Cutting & Butt welding | <b>J</b> Eddy-current detection   | <b>O</b> Welded tubes delivery |





# PRODUCTION EQUIPMENTS



**A** High precision tubes welding line

World advanced forming technology-Korea KTM welded tube production lineBased on the W bending forming method, the protrusion precision of the weld seam tends to be stable to obtain good weld quality and burr precision.

High frequency welding system automatically matches and adjusts, so as to complete products with higher or lower pipe diameter-to-wall thickness ratio, and has a wide application range.



**B**

Roller Hearth  
Type Continuous  
oxygen-free Annealing  
Furnace from Hande Korea



Adopt roller hearth annealing furnace, with high annealing efficiency, large output, no oxidation on the surface, and high surface finish after cold drawing.

**C**

Triple drawing bench  
from Korea



Adopt the most advanced Triple drawing bench unit in the world, improving the production efficiency, and reducing the material consumption; the dimension of the precise steel pipe cold drawn is stable, with inner surface roughness  $Ra \leq 0.4 \mu m$ .



**D**

Fully automatic high frequency induction quenching /  
straightening production line for car door anti-collision rod



**E**

Slitting Machine





**F** Precise straightening unit from Korea



**G** Pipe cutting machine

# INSPECTION INSTRUMENTS

The company is equipped with perfect testing equipment to meet the requirements of various kinds of steel pipe production process and ensure product quality.



**Testing center equipment:**

Roughness tester, hardness tester, universal material testing machine, metallographic specimen grinder, metallographic structure testing device for metal materials, trace element tester for metal materials and other precision testing.